

# Antenna Attachment Requirements

(Applicable to drawings OH-JU-COM002, OH-JU-COM003, OH-JU-COM004, OH-JU-COM005, OH-JU-COM006, OH-JU-COM007 OH-JU-COM008 OH-JU-COM009 & OH-JU-COM010)

## A. General:

1. All requirements and notes contained in this document pertain to the attachment of Wi-Fi and Cellular antennas to Company owned facilities. Municipal owned facilities or poles owned by communication companies do not apply. Please contact Company to verify facility ownership.
2. Equipment specifications for each type of proposed wireless device shall be evaluated and approved by Company.
3. All pole locations shall be evaluated and approved by Company prior to antenna installation. All applicable pole attachment contracts shall be executed and approved before antennas will be allowed to attach.
4. Antennas shall be attached to truck accessible poles only.
5. Only one wireless antenna company's equipment shall be allowed per pole. Placement of devices shall not interfere with Company personnel's ability to access and maintain its facilities.
6. Two (2) Caution signs shall be provided by and installed by equipment owner at each wireless antenna attachment location. Please refer to drawings for details.
7. The bottom of any equipment mounted on a pole must meet NESC guidelines for ground clearance (NESC Rule 232B). Mounted equipment requires a clearance from the bottom of the equipment of 15' above roads, streets.
8. Wireless devices attached to Company facilities shall not contain or be connected to back-up batteries.
9. Any work performed on behalf of Customer shall be performed by a qualified, Company approved contractor.
10. Company reserves the right to disconnect electric service to any wireless antenna at any time if established safe approach distances can not be maintained while work is being performed.
11. Antenna installations must meet NEC grounding and bonding requirements.
12. Wireless company must provide a pole loading analysis performed by a professional engineer. The horizontal pole loading (Extreme wind of 130MPH) must be less than or equal to 70%.
13. If a proposed installation does not meet the requirements of the following drawings, then all equipment associated with the antenna installation (including the antenna) shall be located on another structure.

## B. Cellular Antennas:

Please see notes on drawings OH-JU-COM003, OH-JU-COM009, AND OH-JU-COM010

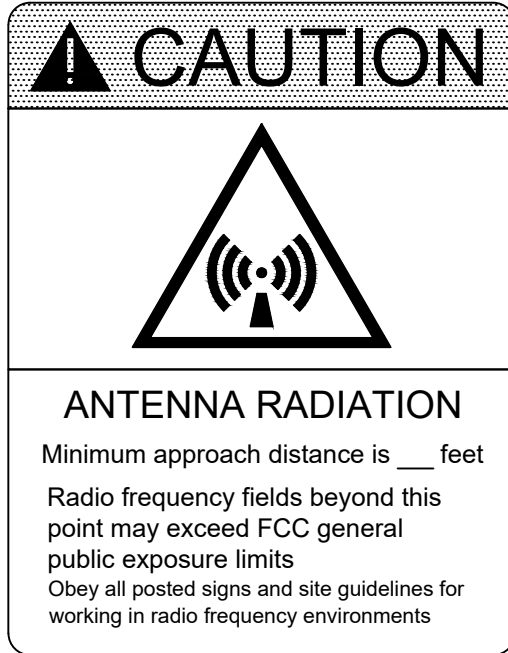
## C. Wi-Fi Antennas:

1. All Wi-Fi antennas shall transmit in the 2.4 GHz - 5.8 GHz frequency band.
2. All Wi-Fi antennas shall meet IEEE 802.11x standards.
3. EIRP (Equivalent Isotropically Radiated Power) shall not exceed 36 dBm (4.0 W).
4. All Wi-Fi antennas and similar devices (directional antennas, security cameras, etc.) shall be mounted on a single 24" minimum - 48" maximum aluminum streetlight bracket comparable to Company stock code EN000354 or EN013774 (see below table for bracket ordering information).

24" Bracket Purchasing Information (EN000354)		
Company	Catalog #	Contact Info
American Electric	91-2401-GL	Ruffin & Assoc 1- 800-445-1992
Utility Metals	M125S020GX	Wesco (337) 294-9132
SALCo	WP-125-2-S	Eric Aertker (504) 469-0136
Maclean Power Sys	S-125-2G	Spence Willis 601-668-8088
48" Bracket Purchasing Information (EN013774)		
Company	Catalog #	Contact Info
Maclean Power Sys	S-125-4G	Spence Willis 601-668-8088
Utility Metals	P125S040	Wesco (337) 294-9132
SALCo	WP-125-4-S	Eric Aertker (504) 469-0136

ENTERGY SERVICES INC.	
THIRD PARTY ANTENNA ATTACHMENT REQUIREMENTS	
APPROVED BY: JRH	DATE: 03/05/07
CHECKED BY: CRG	SCALE: NONE
DRAWN BY: DAT	CEA NO. 00000
 No. OH-JU-COM001	
PLOT 1=32	SH. 1 OF 1

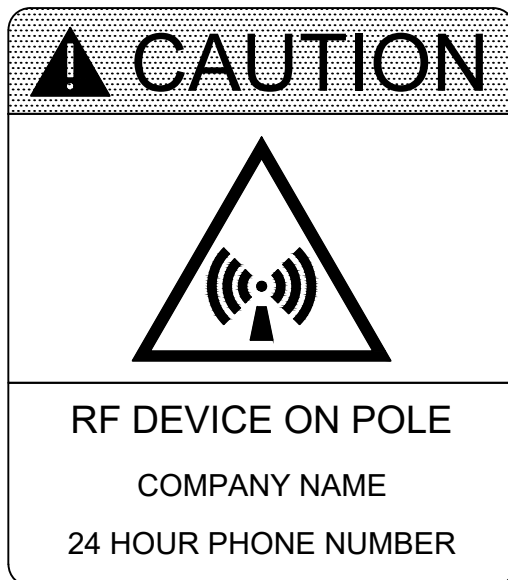
5	09/12/19	General Updates on Periodic Review	ERG	MCC	LWP
4	06/22/18	Added note 12 to limit equipment attachments.	KJM		JRH
3	12/14/16	General review and updates on drawing.	ERG		JRH
2	2/17/15	Revised Drawing numbers and references.	KJM		JRH
1	5/10/07	Added 48" bracket purchasing information to table and to note B. 4.	DAT		JRH
NO.	DATE:	REVISION	DRAW:	CHECK:	APPR:



Upper Sign

Sample shown is  
ELECTROMARK - ES2033

SIGN: CAUTION ANTENNA RADIATION  
.024" Curved Aluminum; 14" X 10", Yellow and Black  
copy on a White background. Four (4) slots for banding.  
Sign shall be preformed by the manufacturer to conform  
to the curvature of a utility pole for easy installation.




Lower Sign

Sample shown is  
ELECTROMARK - ES2032

SIGN: CAUTION RF DEVICE ON POLE  
.024" Curved Aluminum; 14" X 10", Yellow and Black  
copy on a White background. Four (4) slots for banding.  
Sign shall be preformed by the manufacturer to conform  
to the curvature of a utility pole for easy installation.

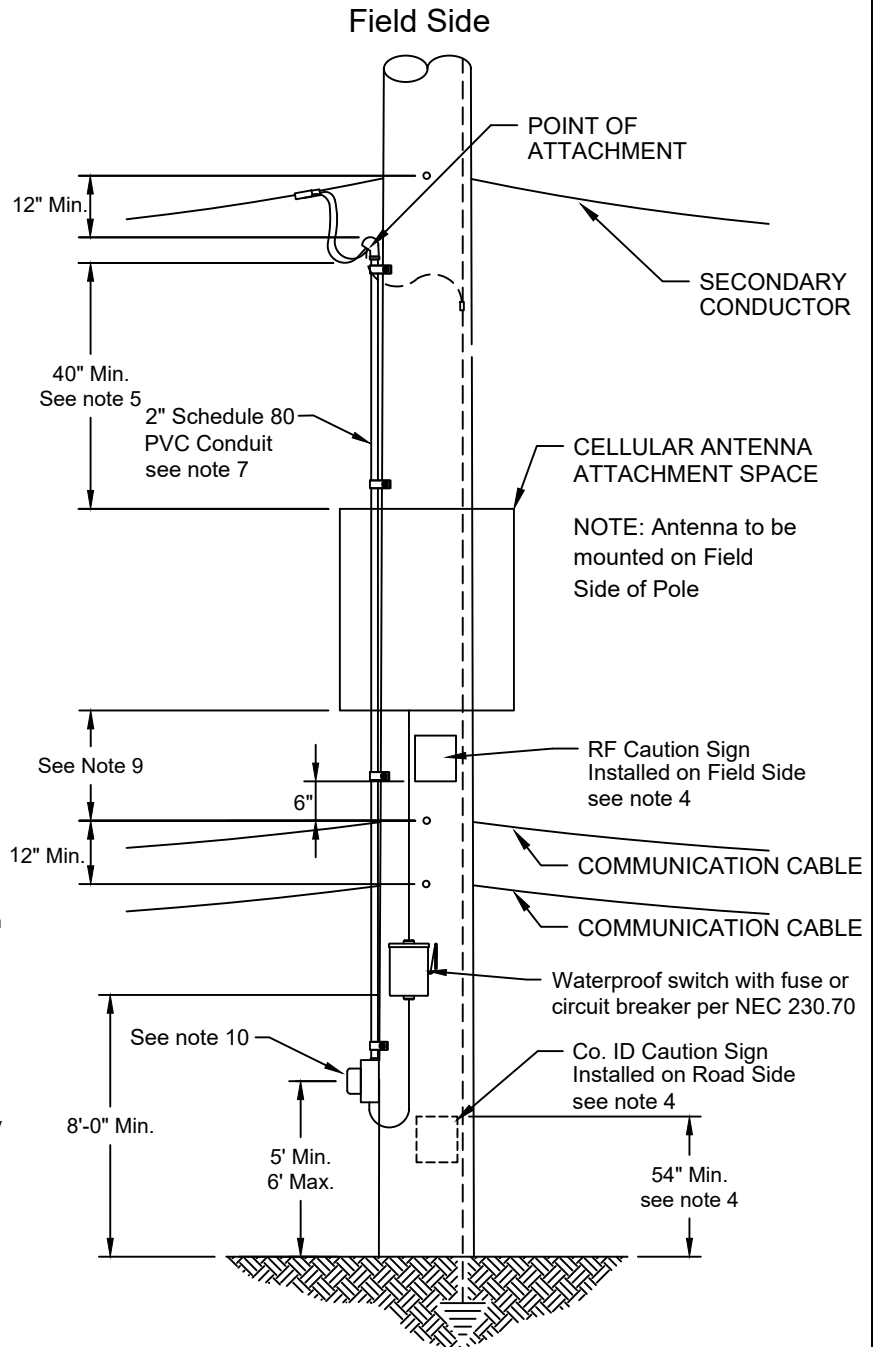
NOTE:  
1. Signs must meet IEEE Standard C95.2 requirements.  
2. WI-FI Customer to specify approach distance information for sign.

4	09/12/19	General Updates on Periodic Review	ERG	MCC	LWP
3	12/14/16	General review and updates on drawing.	ERG		JRH
2	2/17/15	Revised drawing numbers and references.	KJM		JRH
1	5/31/07	Added note 3	DAT		JRH
NO.	DATE:	REVISION	DRAW:	CHECK:	APPR:

ENTERGY SERVICES INC.					
EXAMPLE CAUTION SIGNS FOR WI-FI/CELLULAR EQUIPPED POLES					
APPROVED BY: JRH		DATE: 03/05/07			
CHECKED BY: CRG		SCALE: NONE			
DRAWN BY: DAT		CEA NO. 00000			
		No. OH-JU-COM002			
		PLOT	1=32	SH.	1 OF 1

**NOTES:**

1. Only clean, tangent, non-equipment poles will be considered for antenna attachments.
2. Company to supply and install connection between Company secondary cable and Customer's service riser. Any additional necessary changes to Company's facilities to be performed by Company at Customer's expense.
3. Cellular antenna, mounting bracket, circuit breaker or fuse box, conduit, weather head, service conductors, and RF Caution signs to be provided and installed by Customer.
4. Two (2) RF Caution Signs, meeting IEEE C95.2, must be installed on cellular antenna equipped poles. One sign shall be installed just under the cellular antenna unit. The second sign shall be installed near the base of the pole with the top of the sign at a minimum of fifty-four (54) inches from ground level. See drawing OH-JU-COM002 for sign design.
5. All equipment (including antenna) shall maintain a minimum of forty (40) inches of separation below all Company conductors, including drip loops.
6. For non-wood poles, banding shall be used to attach cellular antenna and conduit.
7. Antenna communication cable shall be installed in Schedule 80 PVC conduit (two (2) inch maximum diameter). Conduit straps should be installed at top and bottom of every conduit installation and every five (5) feet if conduit length is longer than ten (10) feet.
8. 60 ft. maximum pole height.
9. Minimum separation between uppermost communication cable and antenna shall be based on the manufacturer's Minimum Approach Distance for the antenna configuration installed, multiplied by a safety factor of 3.
10. Meter socket requirement to be determined by Authorities having jurisdiction. If applicable, Customer to provide 100A meter base to accept 120/240v 3 wire service at this location. Customer to supply conduit and service conductor from point of attachment to meter base.
11. See drawing OH-JU-COM001 (Third Party Antenna Attachment Requirements) for additional notes.
12. If a proposed installation does not meet the requirements of the following drawings, then all equipment associated with the antenna installation (including the antenna) shall be located on another structure.



ENTERGY SERVICES INC.

**CELLULAR CONNECTION ON  
JOINT USE DISTRIBUTION POLES**

APPROVED BY: JRH DATE: 03/05/07

CHECKED BY: CRG SCALE: NONE

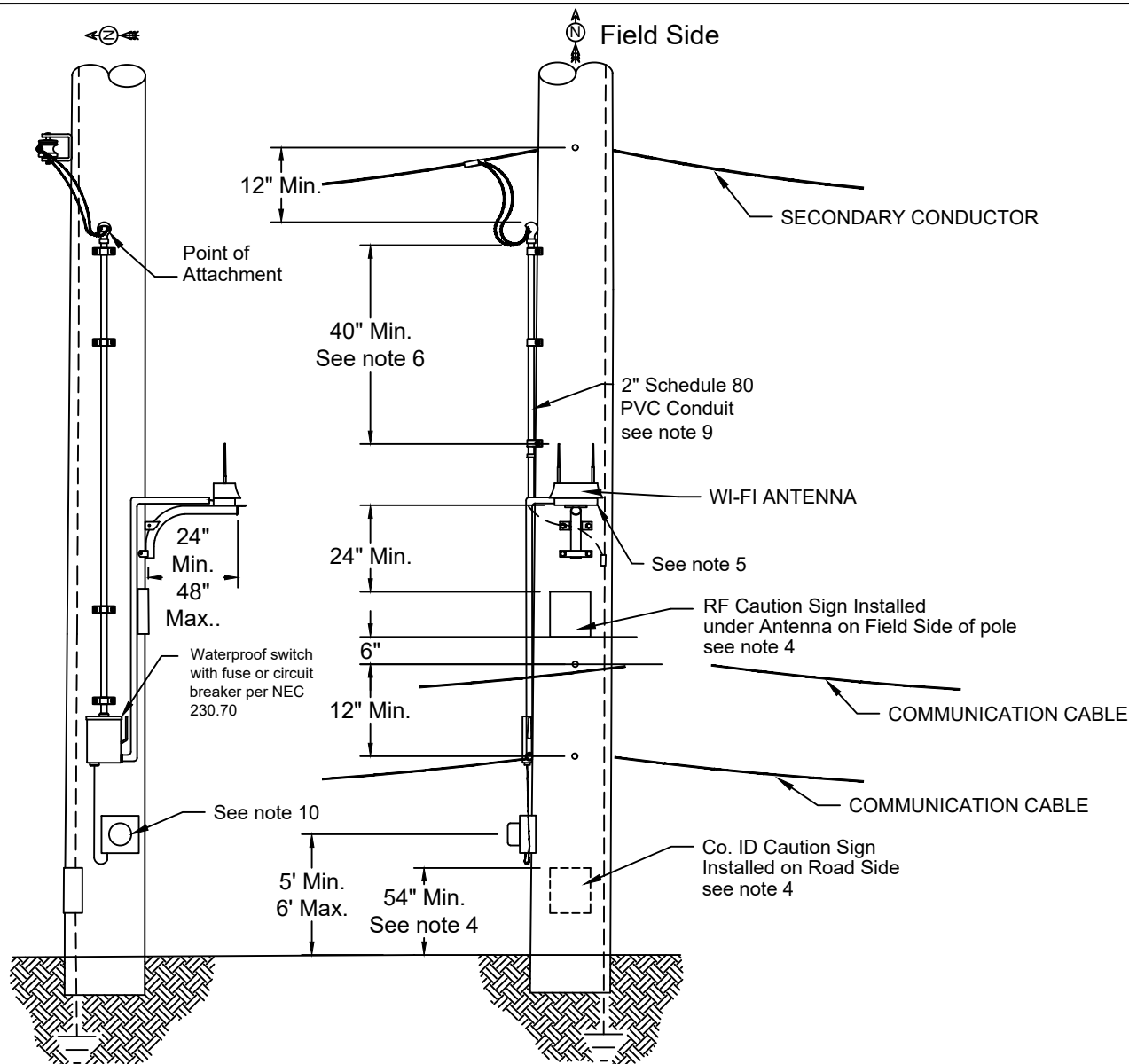
DRAWN BY: DAT CEA NO. 00000

No. OH-JU-COM003

Plot 1=32 SH. 1 OF 1

3	06/22/18	Added note 12 limiting equipment attachments.	KJM	JRH
2	12/14/16	General review and updates on drawing.	ERG	JRH
1	2/17/15	Revised Drawing numbers, references and note 9 and dimension.	KJM	JRH
NO.	DATE:	REVISION	DRAW:	CHECK:





**NOTES:**

1. Only clean, tangent, non-equipment poles will be considered for antenna attachments.
2. Company to provide connections at weatherhead at Customer's expense. Any additional necessary changes to Company's facilities to be performed by Company at Customer's expense.
3. Wi-Fi antenna, conduit, service conductor, fuse or circuit breaker, 24" minimum - 48" maximum aluminum streetlight bracket, and RF Caution signs to be provided and installed by Customer.
4. Two (2) RF Caution Signs, meeting IEEE C95.2, must be installed on Wi-Fi equipped poles. One sign shall be installed just under the Wi-Fi unit. The second sign shall be installed near the base of the pole with the top of the sign at a minimum of fifty-four (54) inches from ground level. See drawing OH-JU-COM002 for sign design.
5. Antenna and mounting bracket to be mounted on Field Side of pole.
6. All Wi-Fi equipment (including antenna) shall maintain a minimum of forty (40) inches of separation below all Company conductors, including drip loops.
7. All Wi-Fi antennas and similar devices (directional antennas, security cameras, etc.) shall be mounted on a single 24" minimum - 48" maximum aluminum streetlight bracket comparable to Company stock code EN000354 or EN013774 (see table on drawing OH-JU-COM001 for more information).
8. For non-wood poles, stainless steel banding shall be used to attach Wi-Fi antenna and conduit.
9. Antenna service conductor shall be installed in Schedule 80 PVC conduit (two (2) inch maximum diameter). Conduit straps should be installed at top and bottom of every conduit installation and every five (5) feet if conduit length is longer than ten (10) feet.
10. Meter socket socket must be installed electrically before the fuse or circuit breaker.
11. See drawing OH-JU-COM001 (Third Party Antenna Attachment Requirements) for additional notes.
12. If a proposed installation does not meet the requirements of the following drawings, then all equipment associated with the antenna installation (including the antenna) shall be located on another structure.

ENTERGY SERVICES INC.

**WI-FI CONNECTION ON  
JOINT USE DISTRIBUTION POLES**

APPROVED BY: JRH DATE: 03/05/07

CHECKED BY: CRG SCALE: NONE

DRAWN BY: DAT CEA NO. 00000

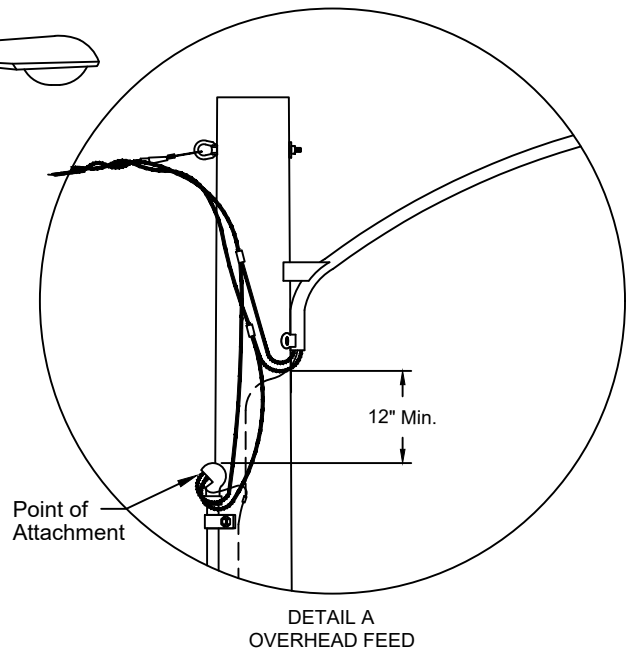
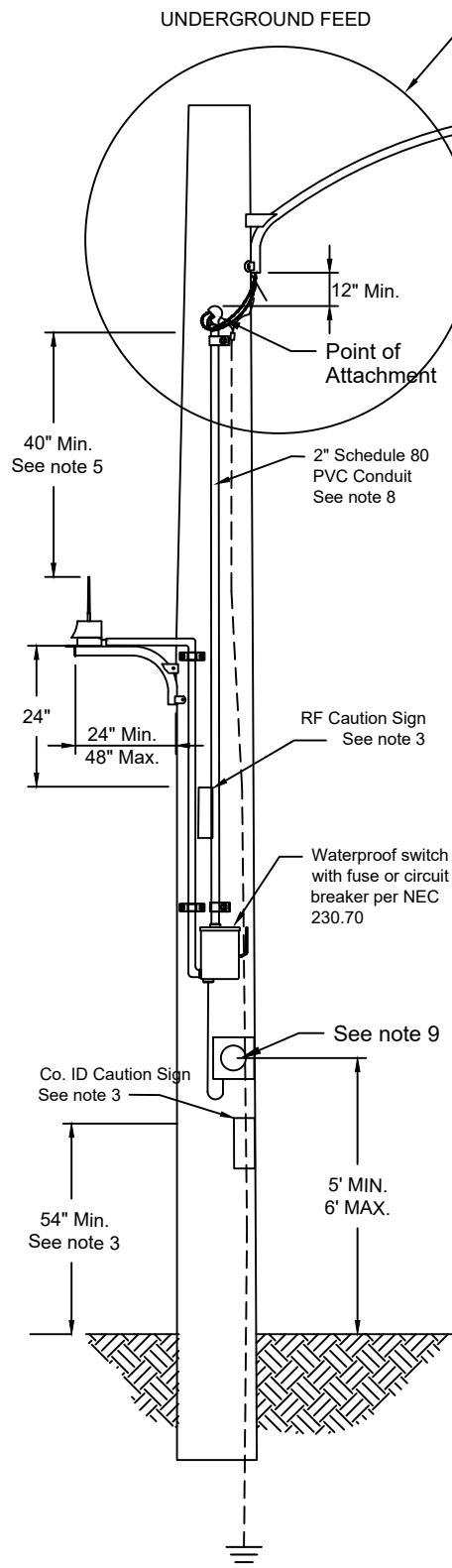


**Entergy**

**No. OH-JU-COM004**

PLOT 1=32 SH. 1 OF 1

5	09/12/19	General Updates on Periodic Review	ERG	MCC	LWP
4	06/22/18	Added note 12 limiting equipment attachments.	KJM		JRH
3	12/14/16	General review and updates on drawing.	ERG		JRH
2	2/17/15	Revised Drawing numbers and references.	KJM		JRH
1	5/31/07	Added 48" maximum for streetlight bracket in note 7	DAT		JRH
NO.	DATE:	REVISION	DRAW:	CHECK:	APPR:



#### NOTES:

1. Company to provide connection at weatherhead at Customer's expense. Any additional necessary changes to Company's facilities to be performed by Company at Customer's expense.
2. Wi-Fi antenna, service conductor, fuse or circuit breaker, conduit, 24' minimum - 48" maximum aluminum streetlight bracket, and RF Caution signs to be provided and installed by Customer.
3. Two (2) RF Caution Signs, meeting IEEE C95.2, must be installed on Wi-Fi equipped poles. One sign shall be installed just under the Wi-Fi unit. The second sign shall be installed near the base of the pole with the top of the sign at a minimum of fifty-four (54) inches from ground level. See drawing OH-JU-COM002 for sign design.
4. Antenna and mounting bracket to be mounted on opposite side of pole from streetlight.
5. All Wi-Fi equipment (including antenna) shall maintain a minimum of forty (40) inches of separation below all Company conductors, including drip loops.
6. All Wi-Fi antennas and similar devices (directional antennas, security cameras, etc.) shall be mounted on a single 24' minimum - 48" maximum aluminum streetlight bracket comparable to Company stock code EN000354 or EN013774.
7. For non-wood poles, stainless steel banding shall be used to attach Wi-Fi antenna and conduit.
8. Antenna service conductor shall be installed in Schedule 80 PVC conduit (two (2) inch maximum diameter). Conduit straps should be installed at top and bottom of every conduit installation and every five (5) feet if conduit length is longer than ten (10) feet.
9. Meter socket must be installed electrically before the fuse or circuit breaker.
10. See drawing OH-JU-COM001 (Third Party Antenna Attachment Requirements) for additional notes.
11. If a proposed installation does not meet the requirements of the following drawings, then all equipment associated with the antenna installation (including the antenna) shall be located on another structure.

ENTERGY SERVICES INC.

### WI-FI CONNECTION ON TYPICAL STREET LIGHT POLE

APPROVED BY: JRH DATE: 03/05/07

CHECKED BY: CRG SCALE: NONE

DRAWN BY: DAT CEA NO. 00000

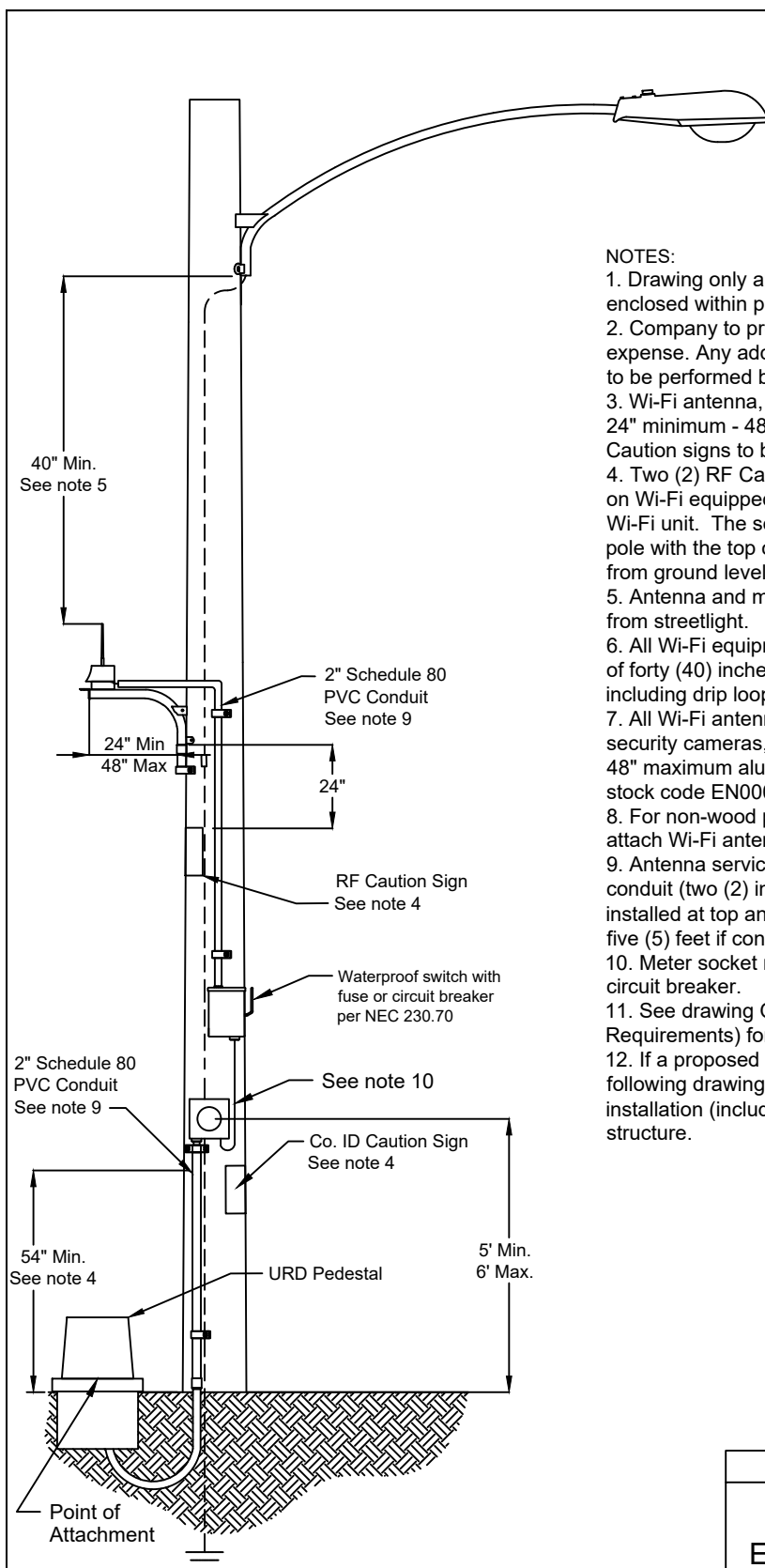


**Entergy**

No. OH-JU-COM005

PLOT 1=32 SH. 1 OF 1

5	09/12/19	General Updates on Periodic Review	ERG	MCC	LWP
4	6/22/18	Added note 11 limiting equipment attachments.	ERG		JRH
3	12/14/16	General review and updates on drawing.	ERG		JRH
2	2/17/15	Revised Drawing numbers and references.	KJM		JRH
1	5/31/07	Changed note 7 to include WI-FI & added 48" max streetlight bracket	DAT		JRH
NO.	DATE:	REVISION	DRAW:	CHECK:	APPR:



#### NOTES:

1. Drawing only applies if streetlight conductor is completely enclosed within pole and streetlight bracket.
2. Company to provide connection at pedestal at Customer's expense. Any additional necessary changes to Company's facilities to be performed by Company at Customer's expense.
3. Wi-Fi antenna, service conductor, fuse or circuit breaker, conduit, 24" minimum - 48" maximum aluminum streetlight bracket, and RF Caution signs to be provided and installed by Customer.
4. Two (2) RF Caution Signs, meeting IEEE C95.2, must be installed on Wi-Fi equipped poles. One sign shall be installed just under the Wi-Fi unit. The second sign shall be installed near the base of the pole with the top of the sign at a minimum of fifty-four (54) inches from ground level. See drawing OH-JU-COM002 for sign design.
5. Antenna and mounting bracket to be mounted on opposite side of from streetlight.
6. All Wi-Fi equipment (including antenna) shall maintain a minimum of forty (40) inches of separation below all Company conductors, including drip loops.
7. All Wi-Fi antennas and similar devices (directional antennas, security cameras, etc.) shall be mounted on a single 24' minimum - 48" maximum aluminum streetlight bracket comparable to Company stock code EN000354 or EN013774.
8. For non-wood poles, stainless steel banding shall be used to attach Wi-Fi antenna and conduit.
9. Antenna service conductor shall be installed in Schedule 80 PVC conduit (two (2) inch maximum diameter). Conduit straps should be installed at top and bottom of every conduit installation and every five (5) feet if conduit length is longer than ten (10) feet.
10. Meter socket must be installed electrically before the fuse or circuit breaker.
11. See drawing OH-JU-COM001 (Third Party Antenna Attachment Requirements) for additional notes.
12. If a proposed installation does not meet the requirements of the following drawings, then all equipment associated with the antenna installation (including the antenna) shall be located on another structure.

ENTERGY SERVICES INC.

### WI-FI CONNECTION ON ENCLOSED STREETLIGHT POLE

APPROVED BY: JRH DATE: 03/05/07

CHECKED BY: CRG SCALE: NONE

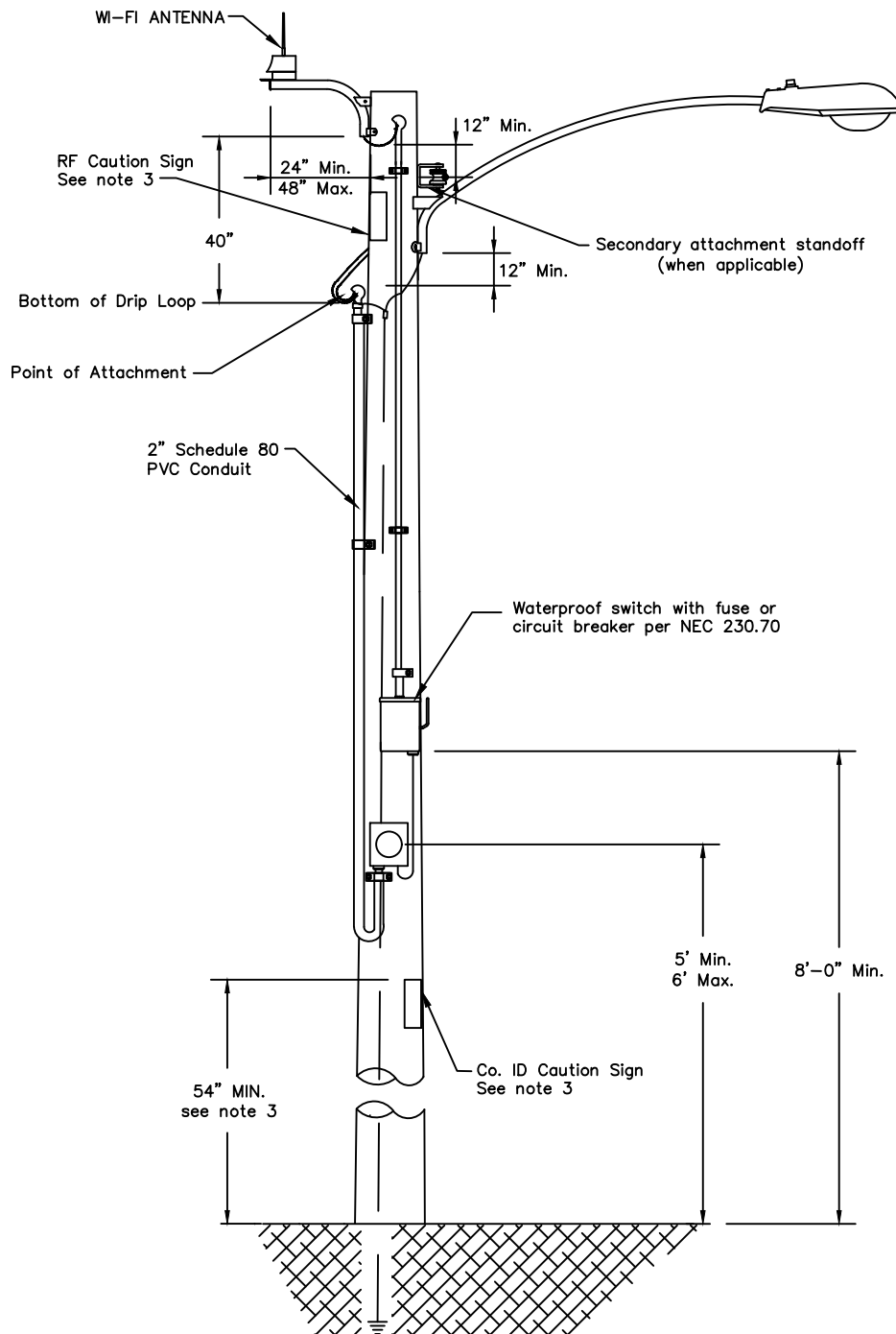
DRAWN BY: DAT CEA NO. 00000



No. OH-JU-COM006

Entergy PLOT 1=32 SH. 1 OF 1


5	09/12/19	General Updates on Periodic Review	ERG	MCC	LWP
4	6/22/18	Added note 12 limiting equipment attachments.	KJM		JRH
3	12/14/16	General review and updates on drawing.	ERG		JRH
2	2/17/15	Revise drawing numbers and references.	KJM		JRH
1	5/31/07	Added 48" maximum for streetlight bracket in notes 3 & 7 & on bracket	DAT		JRH
NO.	DATE:	REVISION	DRAW:	CHECK:	APPR:



# NOTES:

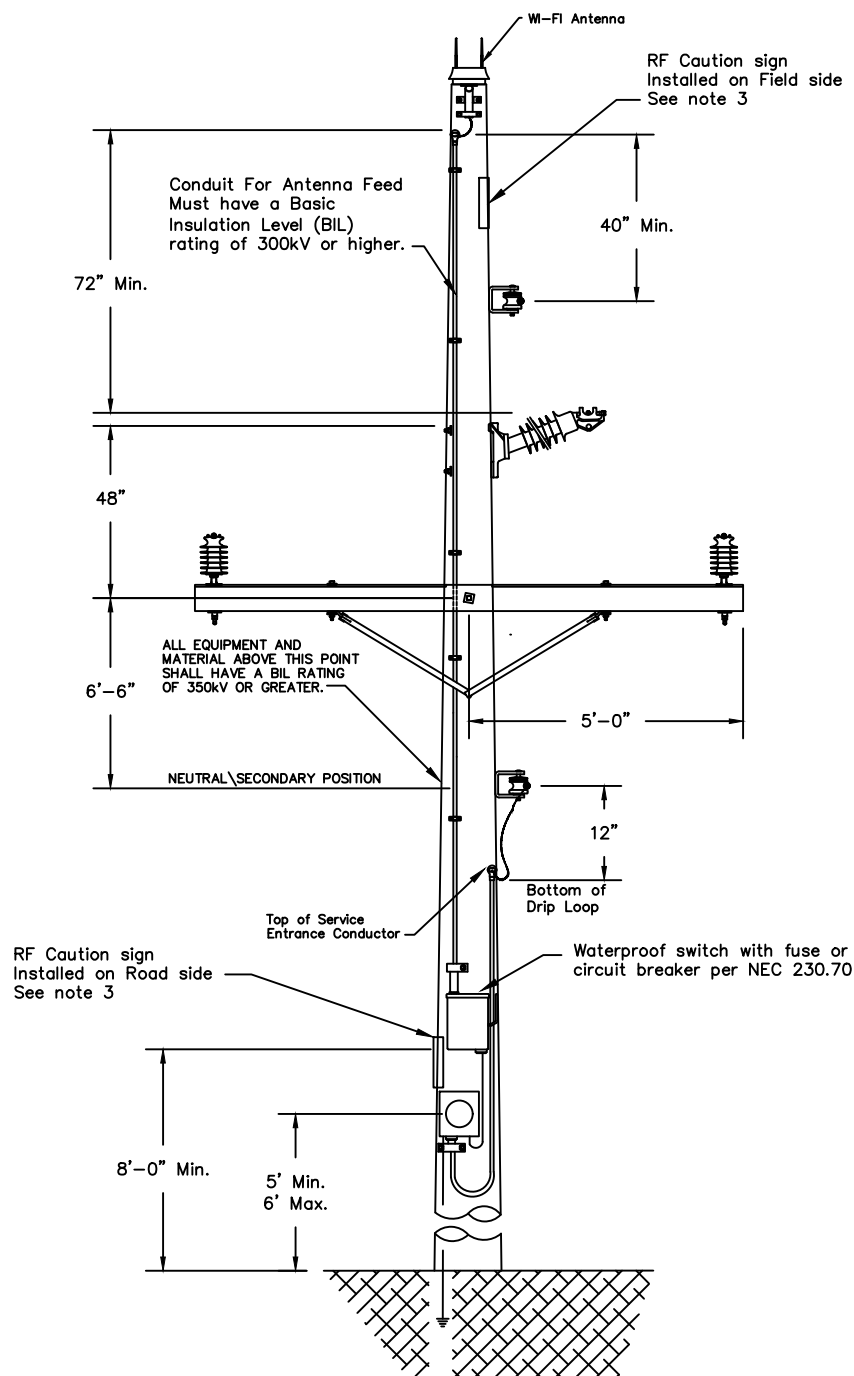
1. ANTENNA AND ASSOCIATED MATERIALS, HARDWARE, ETC., INSTALLED ABOVE THE COMMUNICATION WORKERS' SAFETY ZONE, MUST BE INSTALLED BY AN APPROVED CONTRACTOR QUALIFIED TO WORK IN THE SUPPLY SPACE.
2. POLE LOCATIONS MUST BE APPROVED BY ENTERGY. DO NOT INSTALL ANTENNA ON EQUIPMENT POLES SUCH AS CAPACITOR BANKS, RECLOSERS, SWITCHES, U.G. RISERS, ETC. POLE LOCATION MUST BE BUCKET TRUCK ACCESSIBLE.
3. TWO (2) RF CAUTION SIGNS, MEETING IEEE C95.2, MUST BE INSTALLED ON WI-FI ANTENNA EQUIPPED POLES. ONE SIGN SHALL BE INSTALLED JUST UNDER THE WI-FI ANTENNA UNIT. THE SECOND SIGN SHALL BE INSTALLED NEAR THE BASE OF THE POLE WITH THE TOP OF THE SIGN AT A MINIMUM OF FIFTY-FOUR (54) INCHES FROM THE GROUND LEVEL. SEE DRAWING OH-JU-COM002 FOR SIGN DESIGN.
4. A MINIMUM CLASS 3 POLE IS REQUIRED. POLE HEIGHTS EXCEEDING 60' ABOVE GROUND ARE NOT ALLOWED.
5. ALL ANTENNA DESIGNS MUST BE APPROVED BY ENTERGY.
6. ALL ANTENNAS AND ANCILLARY EQUIPMENT SHALL BE LABELED WITH THE OWNER'S NAME AND CONTACT INFORMATION, INCLUDING AN EMERGENCY CONTACT NUMBER.
7. ANTENNA LOCATIONS CANNOT VIOLATE EXISTING JOINT USE ALLOCATIONS OR AGREEMENTS WITH OTHER JOINT USE PARTIES.

2	09/12/19	General Updates on Periodic Review	ERG	MCC	LWP
1	12/14/16	General review and updates on drawing.	ERG		JRH
NO.	DATE:	REVISION	DRAW:	CHECK:	APPR:

ENTERGY SERVICES INC.		
WiFi Antenna Attachment to Company Owned Light/Service/Secondary Pole Pole Top Installation		
APPROVED BY: JRH	DATE: 09/07/16	
CHECKED BY: KJM	SCALE: NONE	
DRAWN BY: ERG	CEA NO. 00000	
	No. OH-JU-COM007	
	PLOT 1=1	SH. 1 OF 1







#### NOTES:

1. ANTENNA AND ASSOCIATED MATERIALS, HARDWARE, ETC., INSTALLED ABOVE THE COMMUNICATION WORKER'S SAFETY ZONE, MUST BE INSTALLED BY AN APPROVED CONTRACTOR QUALIFIED TO WORK IN THE SUPPLY SPACE.
2. POLE LOCATIONS MUST BE APPROVED BY ENTERGY. DO NOT INSTALL ANTENNA ON EQUIPMENT POLES SUCH AS CAPACITOR BANKS, RECLOSERS, SWITCHES, U.G. RISERS, ETC. POLE LOCATION MUST BE BUCKET TRUCK ACCESSIBLE.
3. TWO (2) CAUTION SIGNS, MEETING IEEE C95.2 MUST BE INSTALLED ON WI-FI ANTENNA EQUIPPED POLES ONE SIGN SHALL BE INSTALLED JUST UNDER THE WI-FI ANTENNA UNIT. THE SECOND SIGN AT A MINIMUM OF FIFTY-FOUR (54) INCHES FROM THE GROUND LEVEL. SEE DRAWING OH-JU-COM002 FOR SIGN DESIGN.
4. A MINIMUM CLASS 3 POLE IS REQUIRED. POLE HEIGHTS EXCEEDING 60' ABOVE GROUND ARE NOT ALLOWED.
5. ALL ANTENNA DESIGNS MUST BE APPROVED BY ENTERGY.
6. ALL ANTENNAS AND ANCILLARY EQUIPMENT SHALL BE LABELED WITH THE OWNER'S NAME AND CONTACT INFORMATION, INCLUDING AN EMERGENCY CONTACT NUMBER.
7. ANTENNA LOCATIONS CANNOT VIOLATE EXISTING JOINT USE ALLOCATIONS OR AGREEMENTS WITH OTHER JOINT USE PARTIES.

ENTERGY SERVICES, INC.

#### WiFi Antenna-Pole Top Installation 2 or 3 Phase Shielded Horizontal Tangent

APPROVED BY: JRH DATE: 09/06/16

CHECKED BY: KJM SCALE: N.T.S.

DRAWN BY: ERG

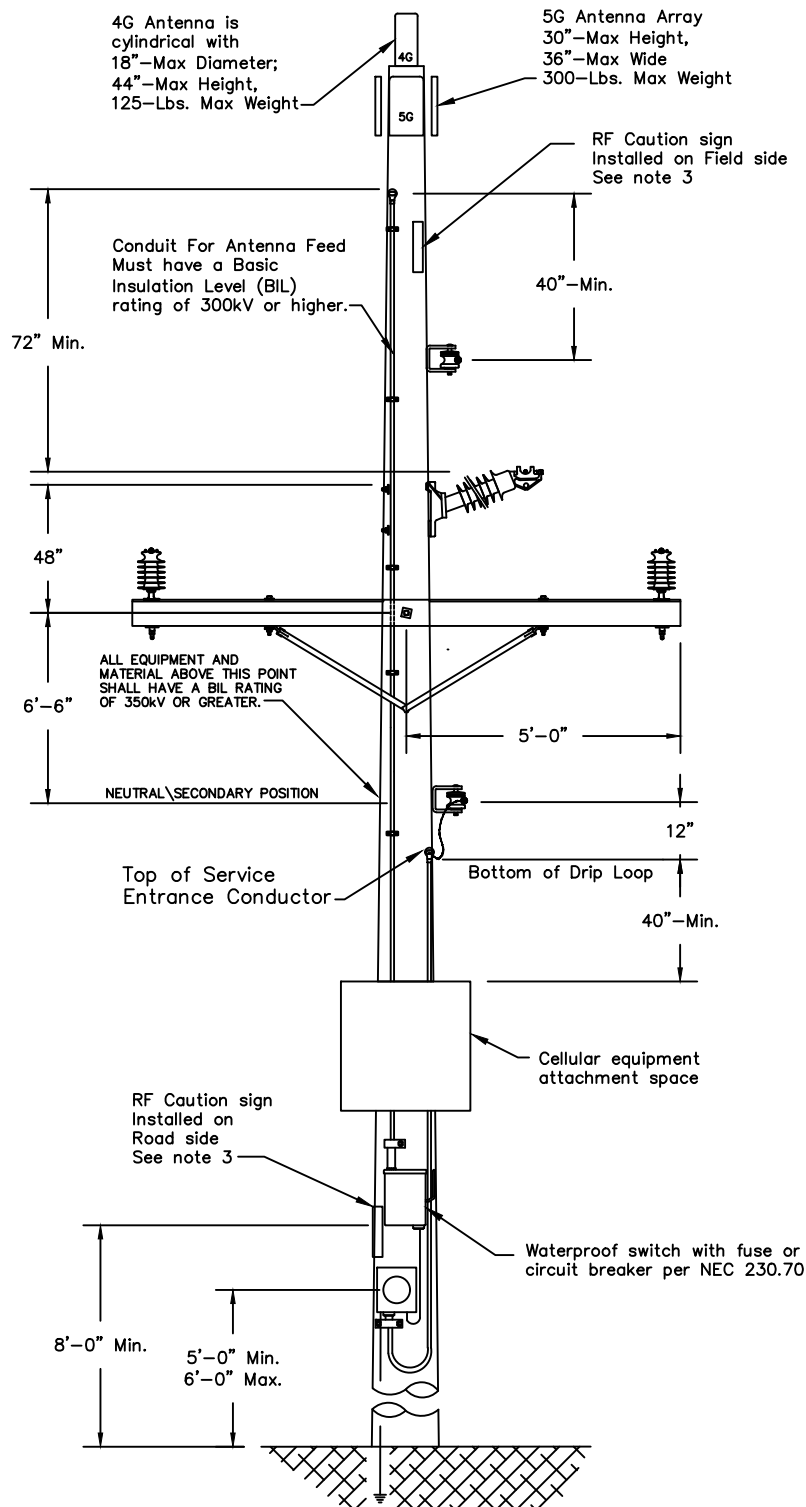


No. OH-JU-COM008

PLOT 1=24 SH. 1 OF 1

2	09/12/19	General Updates on Periodic Review	ERG	MCC	LWP
1	5/25/18	Expanded note one to include material and hardware.	KJM		JRH
NO.	DATE:	REVISION	DRAW:	CHECK:	APPR:





#### NOTES:

1. ANTENNA AND ASSOCIATED MATERIALS, HARDWARE, ETC., INSTALLED ABOVE THE COMMUNICATION WORKER'S SAFETY ZONE, MUST BE INSTALLED BY AN APPROVED CONTRACTOR QUALIFIED TO WORK IN THE SUPPLY SPACE.
2. POLE LOCATIONS MUST BE APPROVED BY ENTERGY. DO NOT INSTALL ANTENNA ON EQUIPMENT POLES SUCH AS CAPACITOR BANKS, RECLOSERS, SWITCHES, U.G. RISERS, ETC. POLE LOCATION MUST BE BUCKET TRUCK ACCESSIBLE.
3. TWO (2) CAUTION SIGNS, MEETING IEEE C95.2 MUST BE INSTALLED ON WI-FI ANTENNA EQUIPPED POLES ONE SIGN SHALL BE INSTALLED JUST UNDER THE WI-FI ANTENNA UNIT. THE SECOND SIGN AT A MINIMUM OF FIFTY-FOUR (54) INCHES FROM THE GROUND LEVEL. SEE DRAWING OH-JU-COM002 FOR SIGN DESIGN. A MINIMUM CLASS 3 POLE IS REQUIRED. POLE HEIGHTS EXCEEDING 60' ABOVE GROUND ARE NOT ALLOWED.
4. ALL ANTENNA DESIGNS MUST BE APPROVED BY ENTERGY.
5. ALL ANTENNAS AND ANCILLARY EQUIPMENT SHALL BE LABELED WITH THE OWNER'S NAME AND CONTACT INFORMATION, INCLUDING AN EMERGENCY CONTACT NUMBER.
6. ANTENNA LOCATIONS CANNOT VIOLATE EXISTING JOINT USE ALLOCATIONS OR AGREEMENTS WITH OTHER JOINT USE PARTIES.

ENTERGY SERVICES, INC.

Cellular Antenna-Pole Top Installation  
2 or 3 Phase Shielded  
Horizontal Tangent

APPROVED BY: LMP DATE: 09/12/19

CHECKED BY: MCC SCALE: N.T.S.

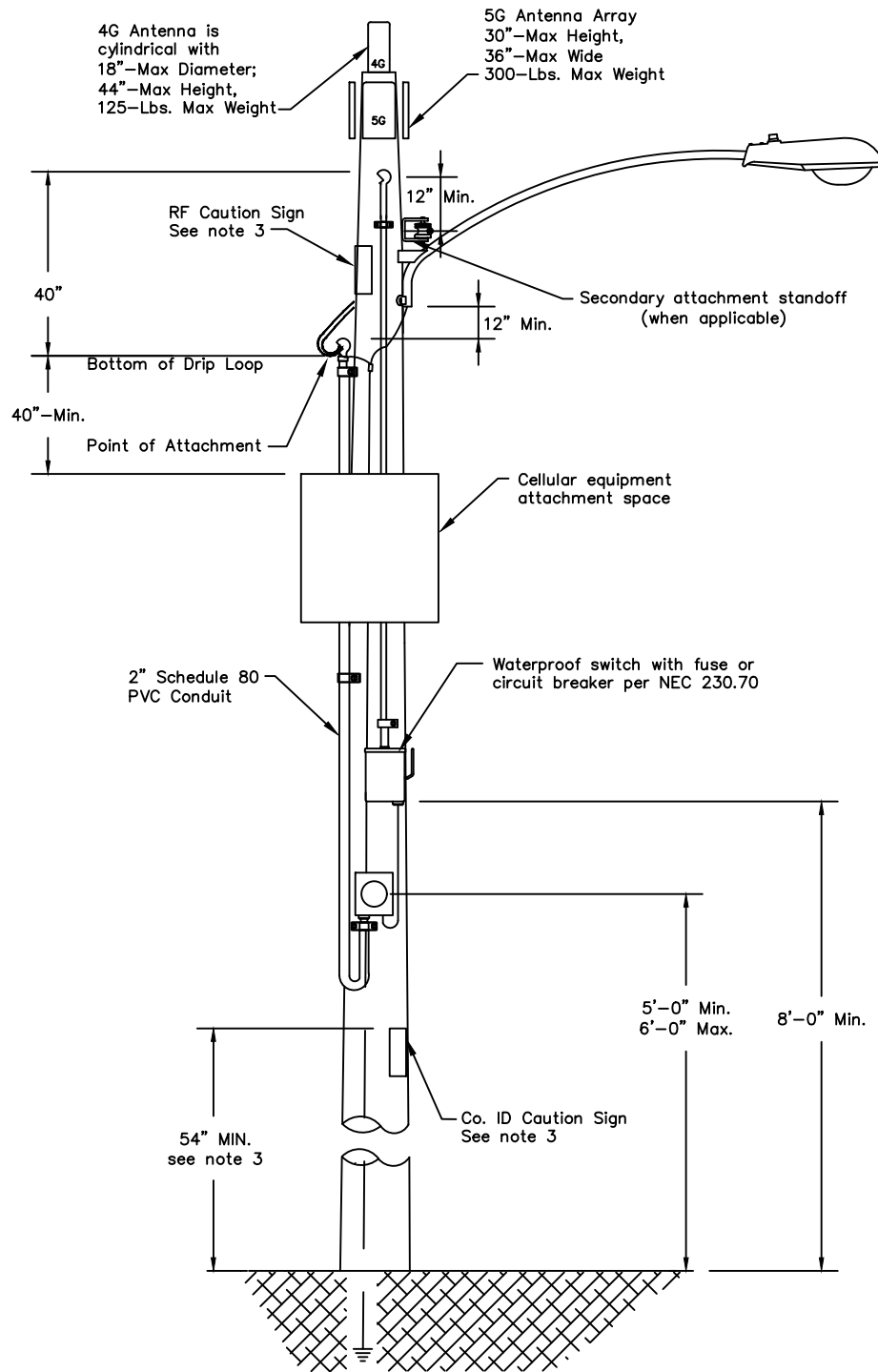
DRAWN BY: ERG



No. OH-JU-COM009

PLOT 1=24 SH. 1 OF 1

NO.	DATE:	REVISION	DRAW:	CHECK:	APPR:



#### NOTES:

1. ANTENNA AND ASSOCIATED MATERIALS, HARDWARE, ETC., INSTALLED ABOVE THE COMMUNICATION WORKERS' SAFETY ZONE, MUST BE INSTALLED BY AN APPROVED CONTRACTOR QUALIFIED TO WORK IN THE SUPPLY SPACE.
2. POLE LOCATIONS MUST BE APPROVED BY ENTERGY. **DO NOT** INSTALL ANTENNA ON EQUIPMENT POLES SUCH AS CAPACITOR BANKS, RECLOSERS, SWITCHES, U.G. RISERS, ETC. POLE LOCATION MUST BE BUCKET TRUCK ACCESSIBLE.
3. TWO (2) RF CAUTION SIGNS, MEETING IEEE C95.2, MUST BE INSTALLED ON CELLULAR ANTENNA EQUIPPED POLES. ONE SIGN SHALL BE INSTALLED JUST UNDER THE CELLULAR ANTENNA UNIT. THE SECOND SIGN SHALL BE INSTALLED NEAR THE BASE OF THE POLE WITH THE TOP OF THE SIGN AT A MINIMUM OF FIFTY-FOUR (54) INCHES FROM THE GROUND LEVEL. SEE DRAWING OH-JU-COM002 FOR SIGN DESIGN.
4. A MINIMUM CLASS 3 POLE IS REQUIRED. POLE HEIGHTS EXCEEDING 60' ABOVE GROUND ARE NOT ALLOWED.
5. ALL ANTENNA DESIGNS MUST BE APPROVED BY ENTERGY.
6. ALL ANTENNAS AND ANCILLARY EQUIPMENT SHALL BE LABELED WITH THE OWNER'S NAME AND CONTACT INFORMATION, INCLUDING AN EMERGENCY CONTACT NUMBER.
7. ANTENNA LOCATIONS CANNOT VIOLATE EXISTING JOINT USE ALLOCATIONS OR AGREEMENTS WITH OTHER JOINT USE PARTIES.

ENTERGY SERVICES INC.

Cellular Antenna Attachment to Company  
Owned Light/Service/Secondary Pole  
Pole Top Installation

APPROVED BY: LMP DATE: 09/12/19

CHECKED BY: MCC SCALE: NONE

DRAWN BY: ERG CEA NO. 00000



**Entergy**

No. OH-JU-COM010

PLOT 1=1 SH. 1 OF 1

NO.	DATE:	REVISION	DRAW:	CHECK:	APPR: